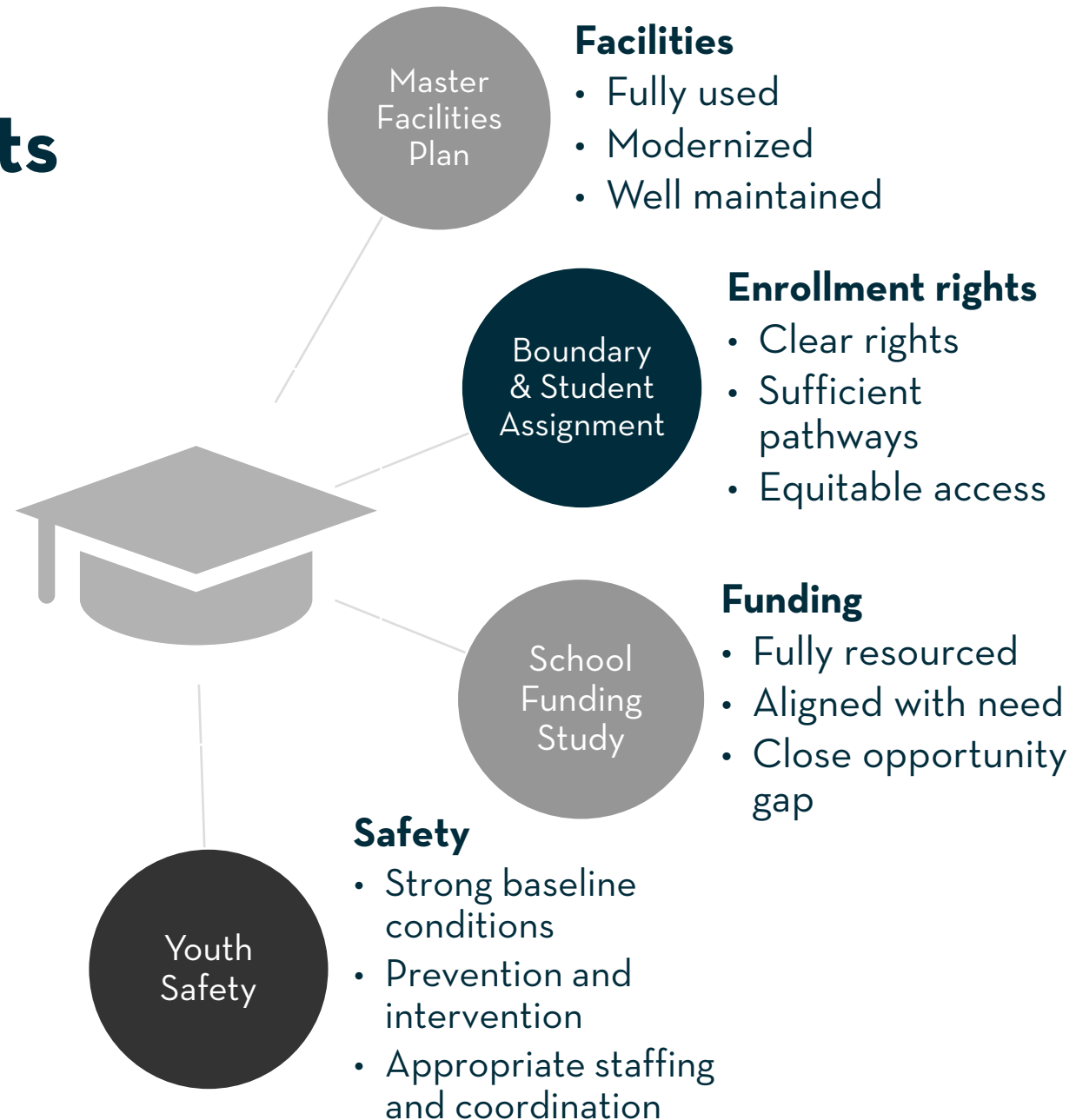


DC Public Education Boundary and Student Assignment Study

Oyster-Adams EC
January 23, 2024



Major DME projects for 2023



What is the 2023 Boundary and Student Assignment Study?

A set of recommendations based on analytic findings and community feedback about how families and students can access public schools.

Types of recommendations:

- Updated DCPS school boundaries
- Revised school feeder patterns
- Suggested programmatic opportunities
- Added enrollment lottery preferences

Legislated per the Attendance Zone Boundaries Amendment Act of 2022 and done every 10 years

Goals

- Clear rights
- Adequate capacity
- Equitable access

Advisory Committee

Members

26 committee members +
chairperson DM Kihn

Ward-designated
members

Citywide members

Agency representatives

Timeline

- Meets monthly
- Final recommendations in
March 2024

[Scan to learn more about the
Advisory Committee and members](#)



Meetings are live streamed and recorded - find past recordings [here](#)

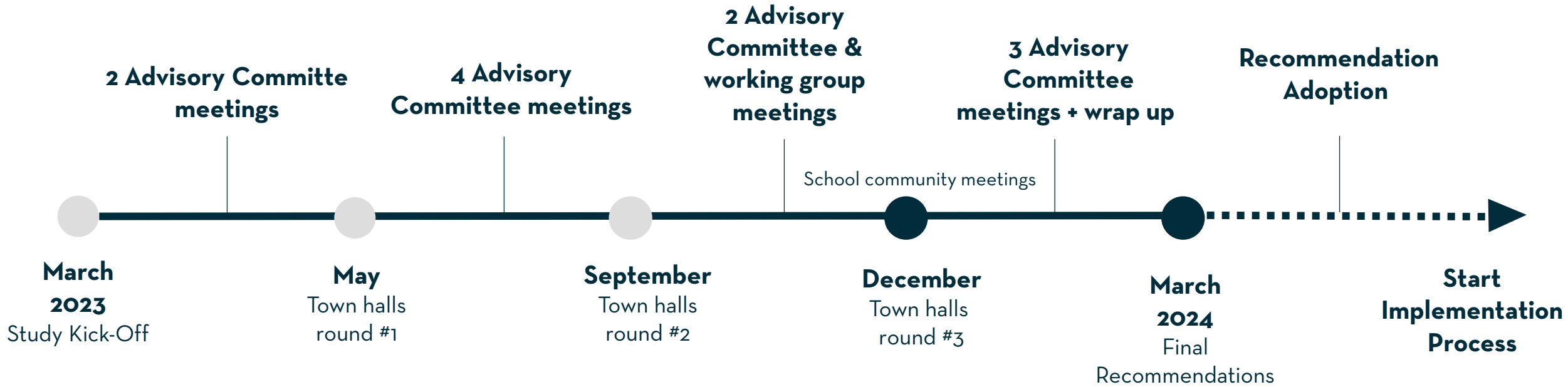
Priority challenges

- Unbalanced enrollments among DCPS boundary schools
- Inequitable availability to robust programming and rigorous curriculum
- Socioeconomically and racially segregated schools
- System-related enrollment instability
- Inequitable availability and access to special education programming
- Some students and families feel unsafe traveling to and from school
- Mismatched access to early childhood seats in Title 1 schools

Guiding principles

- A strong system of by-right neighborhood schools
- Predictable and continuous access to schools
- Equitable access to high quality schools
- Racially and socio-economically diverse schools

Roadmap



Implementation timeframe

Boundary and Feeder Revisions

- Earliest would be **SY25-26**
- Enrolled students can **continue to attend their school** through the last grade offered
- Brief period of **feeder phase-in** and **sibling enrollment grandfathering**

Citywide and Other Policies

- **Longer timeframe** for implementation
- Once recommendation is accepted, **more school engagement** to come
- **Implementation details** to be determined **in coordination with schools**
- **Phasing in** is expected

Types of Boundary Study recommendations being considered

Geographic Designation Examples	Programmatic Feeder Designation Examples	Programmatic Investment Examples	Equitable Access Examples
<ul style="list-style-type: none">• Adjust select boundaries• Identify clear ES feeders and boundary for Euclid MS• Phase out dual middle school rights	<ul style="list-style-type: none">• Establish dual language feeder middle schools closer to dual language elementary schools• Improve transparency of self-contained special education feeder pathways for families	<ul style="list-style-type: none">• Recommend rigorous additional programming for DCPS schools in Wards 7 and 8• Expand opportunities for shared secondary programming	<ul style="list-style-type: none">• Recommend schools with <30% at risk enrollment implement at risk set asides in lottery• Explore pairing schools to address extreme differences in neighboring at risk enrollment

For more information about potential recommendations, see the [December Town Hall materials](#)

Challenge: high utilization at Oyster ES

Oyster ES has very high utilization while maintaining a dual language programming model.

The future housing pipeline in the boundary suggests enrollment could increase at the school in the next five years.

Enrollment projections suggest utilization will remain high: ranging from 99% to 107% by SY27-28.

Challenges:

- Utilization is high: 117% in SY22-23
- Maintains a dual language model requiring out of boundary enrollment
- Future housing pipeline suggests potential impact on enrollment in the boundary

* Utilization based on SY22-23 programmatic capacity

Oyster ES Challenge - in detail

Challenge: Overutilization creating a crowded school

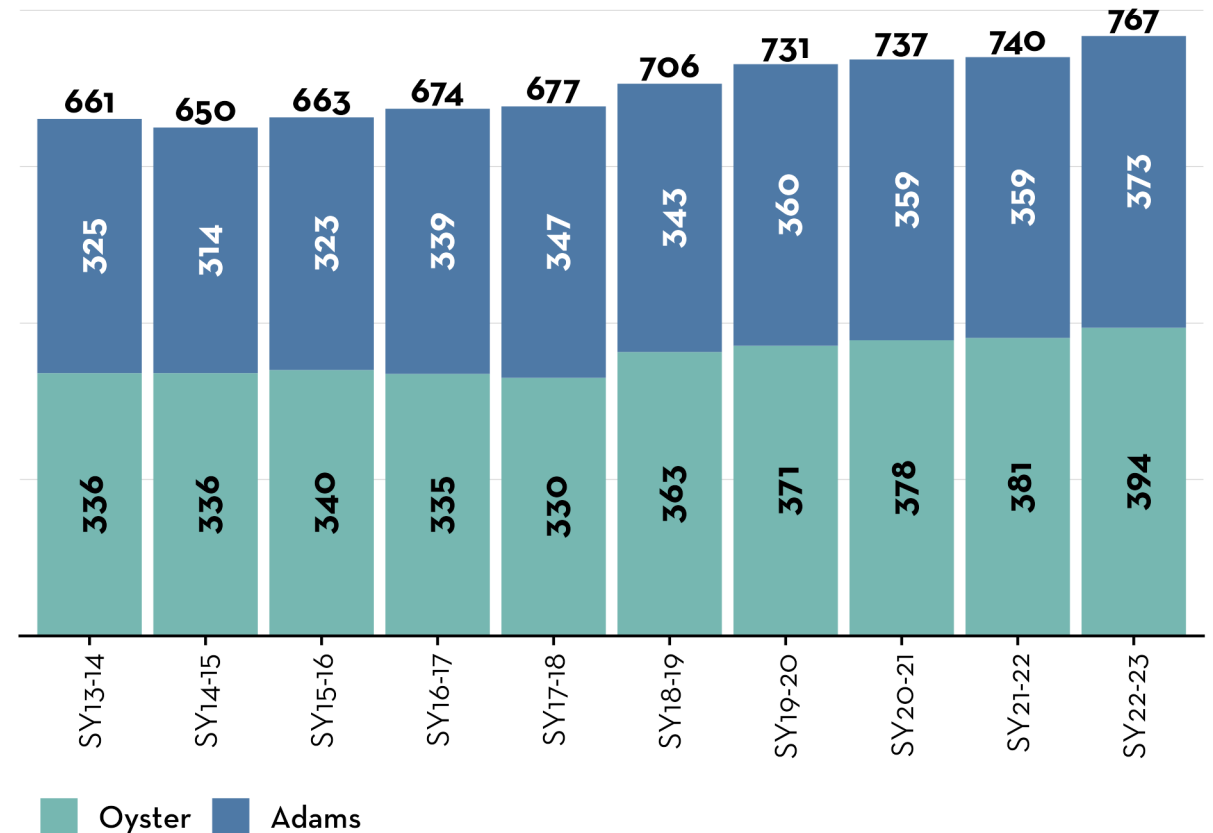
Oyster ES enrollment up since 2013: From **336** students in **SY13-14** to **394** students in **SY22-23**. Preliminary SY23-24 has held steady in grades PK to 3.

Utilization: latest programmatic capacity for Oyster ES is 336 students. Utilization is very high (117%).

Dual language model: maintains a school population with a balance of Spanish-dominant and English-dominant students requiring out of boundary enrollment (39% OOB in grades PK4 to 3 in SY22-32).

Housing pipeline: Estimates suggest an additional approx. 40 in boundary PK-3rd students between 2024 and 2028 from three projects in the pipeline.

Oyster-Adams EC enrollment over time



Where we are in the process - testing ideas

Boundary revision

- Explore adjusting part of the Oyster-Adams and Eaton boundaries to balance enrollment.
- Families living in the adjusted sections would have a different right to their school than before
- No students would be unenrolled if their boundary rights change

Move 3rd grade to Adams campus

- Approx 85-90 students (SY22-23).
- Adams will have increased capacity when modernization is completed in SY25-26.
- Requires engaging staff at Oyster and Adams about impact on instruction

Not considered:

- Reducing out of boundary enrollment due to need for language dominance balance
- Reduce or remove PreK offering

MFP 2023 considerations:

- Site is constrained
- Not part of FY24-29 CIP

Potential solution: Adjust Oyster/Eaton boundaries

Description:

Potentially reassign NW section of the Oyster-Adams EC boundary to Eaton ES to solve for utilization.

Changes the MS feeder in the reassigned section from Oyster-Adams EC to Hardy MS and the HS feeder from Jackson-Reed HS to MacArthur HS.

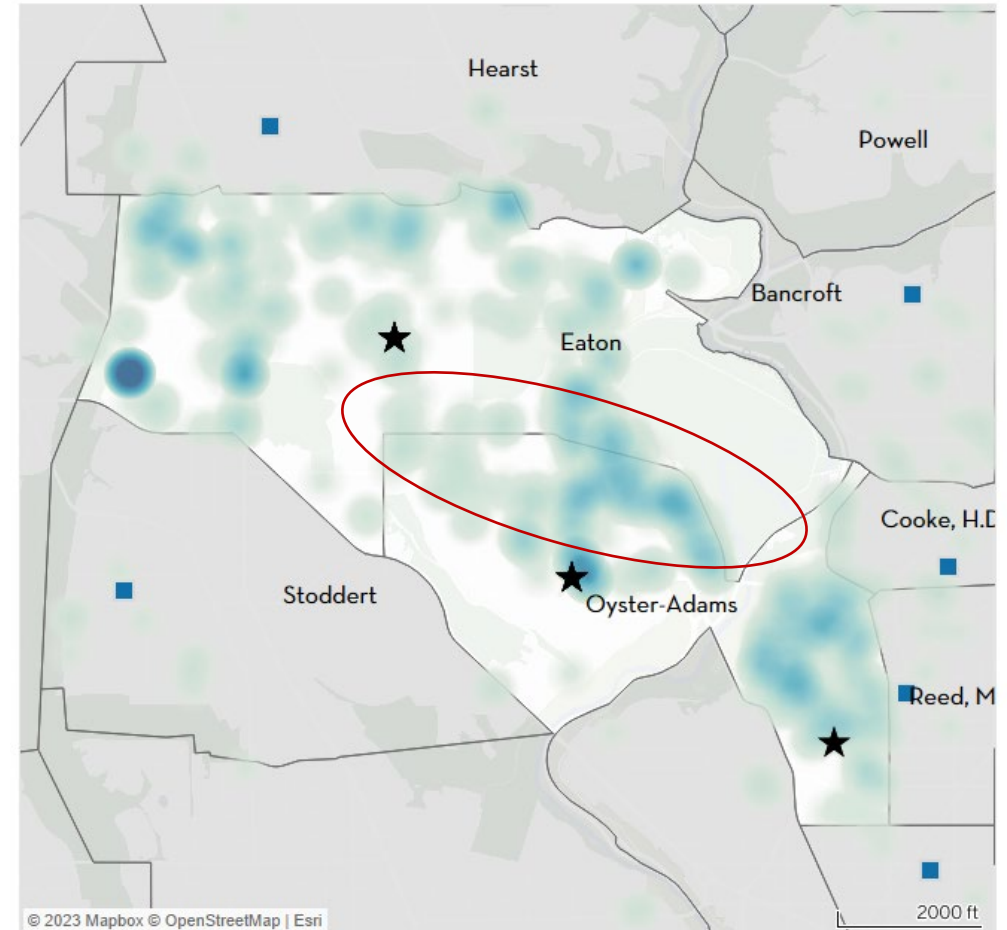
Rationale:

Potentially balances enrollment between Oyster ES and Eaton ES boundaries.

Concerns:

Eaton ES must be able to absorb additional families without causing overcrowding.

Focus area for potential boundary adjustment:



Feedback and discussion

Challenge

Oyster ES has high utilization with anticipated future in boundary enrollment increases.

Current potential solutions

- Reassign NW section of the Oyster-Adams EC boundary to Eaton ES as early as SY25-26
- Explore alternative boundary revisions
- Explore feasibility of moving 3rd grade to Adams facility
- Other?

Reactions? Thoughts?

Other ideas that should be considered?

Boundary Explorer Tool and Survey

DME Attendance Boundary Analysis English **Take Survey**

Your assignments **Systemwide** Edit

Click on a school on the map or use the search bar below to learn more about a school. After selecting a metric category to explore, you can compare how each different set of strategies could potentially impact a school.

	11	8	10
i Schools with utilization between 50-65%	19	24	21
i Schools with utilization between 65-80%	23	26	30
i Schools with utilization between 80-95%	18	18	16
i Schools with utilization between 95-110%	8	6	5

School Level
 ES MS HS

Strategy
 Existing Utilization Equitable access

Boundary
 Potential Boundary Change
 Potential Boundary

Schools
 DCPS by-right
 DCPS Citywide
 Public charter school



Next steps

Analytic follow up and continued community engagement

AC Meeting 11 – February 6

- Finalize recommendations

AC Wrap up – late February tbd

Final report release – March 2024



Explore ideas
in the map,
click to
comment, fill
out survey

Boundary Explorer:
dcschoolboundaryexplorer.com/map

Direct link to survey:
<https://www.dcschoolboundaryexplorer.com/map?mode=view&survey=open>

Boundary study resources: <https://dme.dc.gov/boundaries2023>

Appendix: Housing pipeline for Eaton ES and Oyster-Adams EC boundaries

Project Name	Project Address	Housing Type	Public School Student Multiplier	Anticipated Units, 2024-2028	Anticipated Units, 2029-2033	Estimated public school students, 2024-2028	Estimated public school students, 2029-2033	Elementary school boundary, 2023
Suntrust Plaza Redevelopment	1800 COLUMBIA ROAD NW	Condo	6	50	0	3	0	Oyster-Adams
2607 Connecticut Ave Mixed Use	2607 CONNECTICUT AVENUE NW	Rental	7	28	0	2	0	Oyster-Adams
Wardman Hotel Residential Redevelopment	2660 WOODLEY ROAD NW	Rental	7	900	0	63	0	Oyster-Adams
Wardman Hotel Residential Redevelopment	2660 WOODLEY ROAD NW	Condo	6	162	0	10	0	Oyster-Adams
3427 Wisconsin Avenue NW Residential	3427 WISCONSIN AVENUE NW	Rental	7	0	48	0	3	Eaton

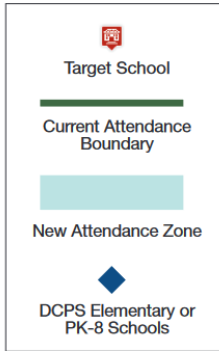
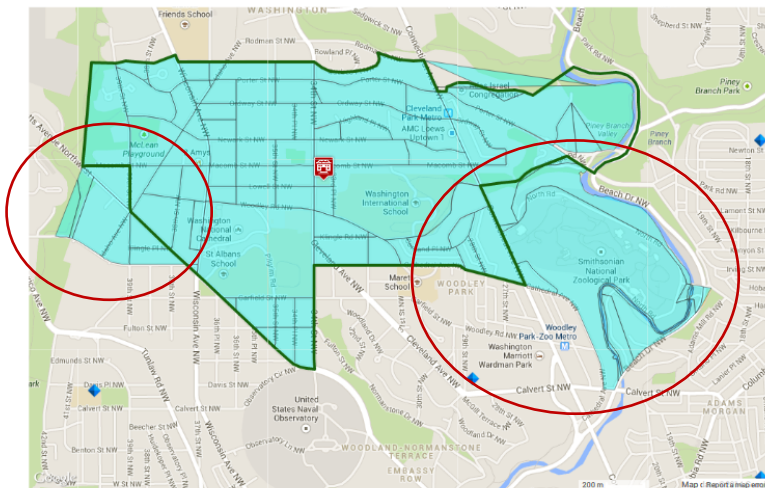
- Based on existing student yields, DC Policy Center estimated that there could be ~40 additional PK-3rd public school students in the Oyster-Adams EC boundary in new housing between 2024 and 2028 and <10 in Eaton ES boundary.
- There is a great deal of uncertainty with projects in the housing pipeline and this is even more true with estimates further out (2029-2033).
- Estimate does not distinguish between students new to the boundary vs. students who may move from existing housing in the boundary.

Appendix: 2013-14: Oyster-Adams expanded to include the former Adams ES boundary immediately around the Adams building while Eaton absorbed a small section in the northeast corner of the Oyster-Adams zone and a portion of the Stoddert zone.

Eaton Elementary School Boundary and Feeder Pathway
3301 Lowell St. NW

Approved August 2014

Eaton Elementary School is the public school of right for all school-age children living within the attendance zone. Families can also apply out-of-boundary to DCPS schools or public charter schools through a lottery process. No changes will go into effect before the 2015-16 school year.



SY 2013-14
Enrollment: 470
In-Boundary: 37%
Bldg Capacity: 415
Bldg Utilization: 113%

Attendance Zone Changes: Eaton's attendance zone expands along the southeast boundary to absorb a small portion of Oyster-Adams' zone and expands southwest to absorb a portion of the Stoddert zone, to relieve crowding.

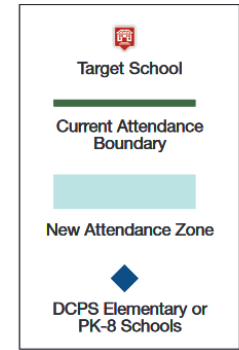
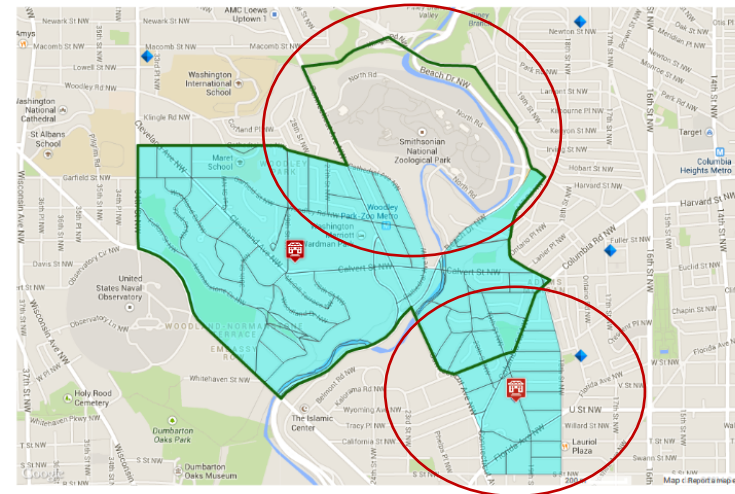
Geographic Feeder Pathway: Anyone living in the new attendance zone for Eaton ES is zoned for and has a right to attend Hardy MS and Wilson HS. Any student attending the school out-of-attendance zone has the right to continue in the feeder pathway to Hardy. Feeder pathway changes were made to better align school building capacity with population and with boundary participation rates, and to support racial/ethnic and socioeconomic diversity, where possible.

Programmatic Feeder Pathway: No programmatic feeder pathway.

Oyster-Adams Bilingual Education Campus Boundary and Feeder Pathway
2801 Calvert St. NW and 2020 19th St. NW

Approved August 2014

Oyster-Adams Bilingual Education Campus is the public school of right for all school-age children living within the attendance zone. Families can also apply out-of-boundary to DCPS schools or public charter schools through a lottery process. No changes will go into effect before the 2015-16 school year.



SY 2013-14
Enrollment: 661
In-Boundary: 39%
Bldg Capacity: 674
Bldg Utilization: 98%

Attendance Zone Changes: Oyster-Adams boundary expands to include the former Adams ES boundary immediately around the Adams school building. Eaton absorbs a small section in the northeast corner of the Oyster-Adams zone.

Geographic Feeder Pathway: Anyone living in the new boundary for Oyster-Adams EC is zoned for and has a right to attend Wilson HS. Any student attending the school out-of-boundary has the right to continue in the feeder pathway to Wilson. Feeder pathway changes were made to better align school building capacity with population and with boundary participation rates, and to support racial/ethnic and socioeconomic diversity, where possible.

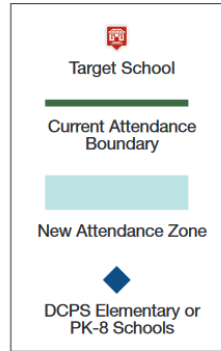
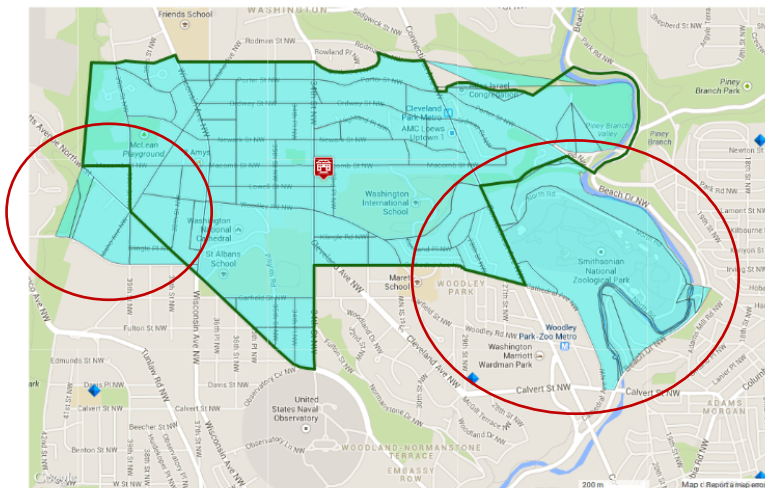
Programmatic Feeder Pathway: Oyster-Adams EC is a dual-language school. Eighth graders at Oyster-Adams EC have the right to attend the dual-language program at Roosevelt HS.

Appendix: 2013-14: Oyster-Adams expanded to include the former Adams ES boundary immediately around the Adams building while Eaton absorbed a small section in the northeast corner of the Oyster-Adams zone and a portion of the Stoddert zone.

Eaton Elementary School Boundary and Feeder Pathway
3301 Lowell St. NW

Approved August 2014

Eaton Elementary School is the public school of right for all school-age children living within the attendance zone. Families can also apply out-of-boundary to DCPS schools or public charter schools through a lottery process. **No changes will go into effect before the 2015-16 school year.**



SY 2013-14
Enrollment: 470
In-Boundary: 37%
Bldg Capacity: 415
Bldg Utilization: 113%

Attendance Zone Changes: Eaton's attendance zone expands along the southeast boundary to absorb a small portion of Oyster-Adams' zone and expands southwest to absorb a portion of the Stoddert zone, to relieve crowding.

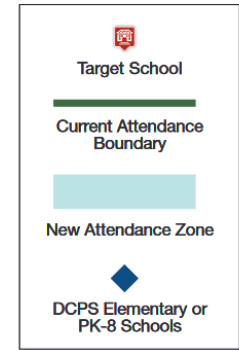
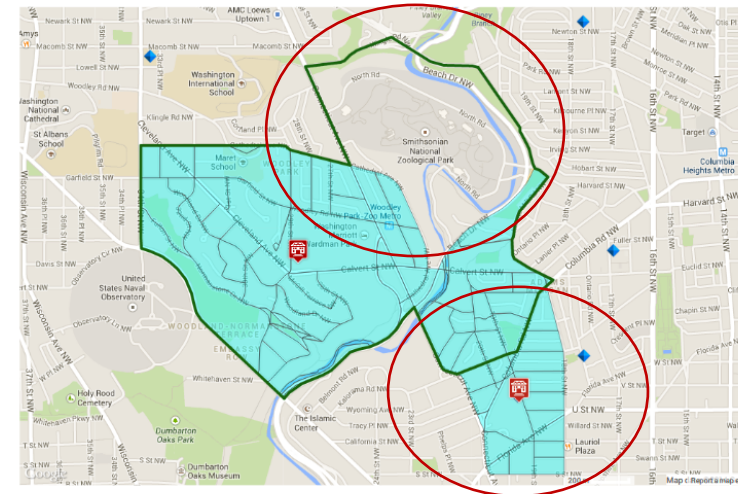
Geographic Feeder Pathway: Anyone living in the new attendance zone for Eaton ES is zoned for and has a right to attend Hardy MS and Wilson HS. Any student attending the school out-of-attendance zone has the right to continue in the feeder pathway to Hardy. Feeder pathway changes were made to better align school building capacity with population and with boundary participation rates, and to support racial/ethnic and socioeconomic diversity, where possible.

Programmatic Feeder Pathway: No programmatic feeder pathway.

Oyster-Adams Bilingual Education Campus Boundary and Feeder Pathway
2801 Calvert St. NW and 2020 19th St. NW

Approved August 2014

Oyster-Adams Bilingual Education Campus is the public school of right for all school-age children living within the attendance zone. Families can also apply out-of-boundary to DCPS schools or public charter schools through a lottery process. **No changes will go into effect before the 2015-16 school year.**



SY 2013-14
Enrollment: 661
In-Boundary: 39%
Bldg Capacity: 674
Bldg Utilization: 98%

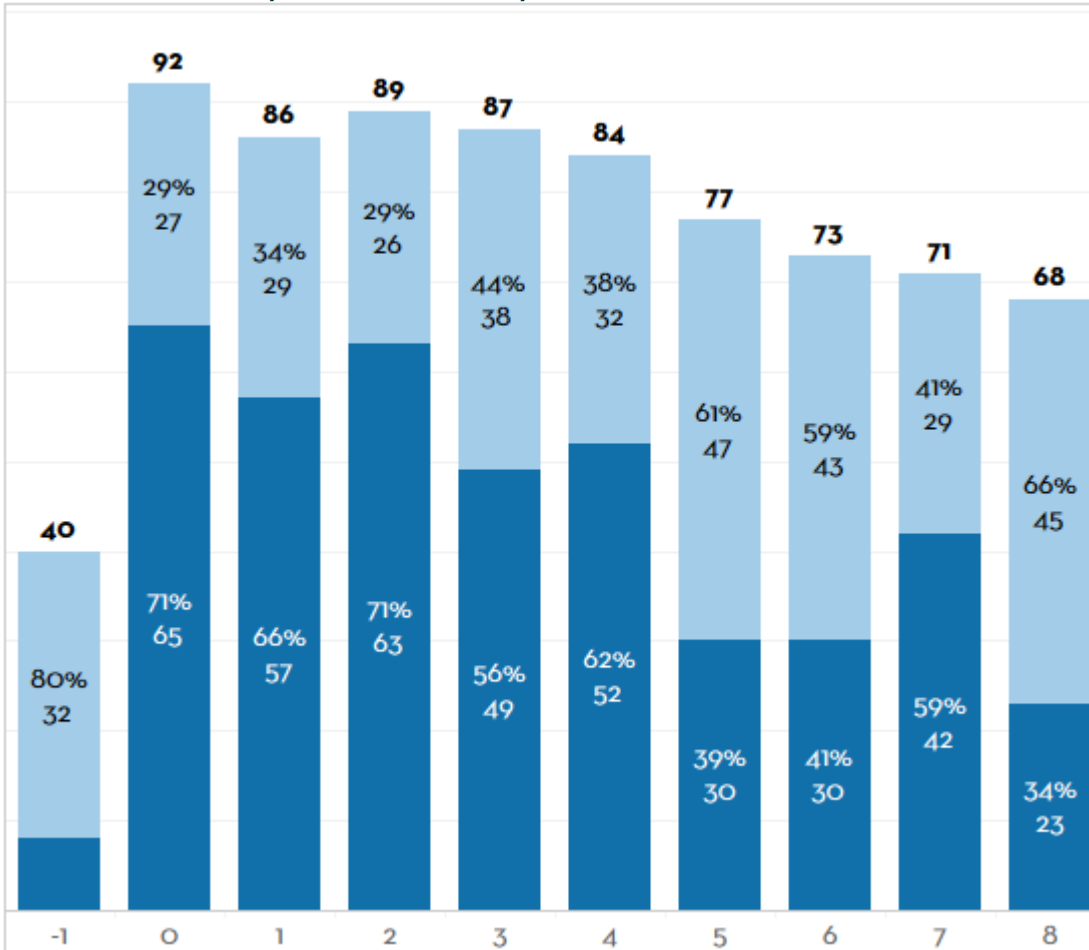
Attendance Zone Changes: Oyster-Adams boundary expands to include the former Adams ES boundary immediately around the Adams school building. Eaton absorbs a small section in the northeast corner of the Oyster-Adams zone.

Geographic Feeder Pathway: Anyone living in the new boundary for Oyster-Adams EC is zoned for and has a right to attend Wilson HS. Any student attending the school out-of-boundary has the right to continue in the feeder pathway to Wilson. Feeder pathway changes were made to better align school building capacity with population and with boundary participation rates, and to support racial/ethnic and socioeconomic diversity, where possible.

Programmatic Feeder Pathway: Oyster-Adams EC is a dual-language school. Eighth graders at Oyster-Adams EC have the right to attend the dual-language program at Roosevelt HS.

Appendix: In-boundary enrollment by grade

Enrollment by in-boundary status, SY22-23



- Enrollment by in-boundary students is highest in K and 2nd grades.
- Overall PK-3 in-boundary enrollment was 242/394 students (61%).
- PK-8 in-boundary enrollment was 419/767 students (55%).

■ Out of boundary students
■ In boundary students