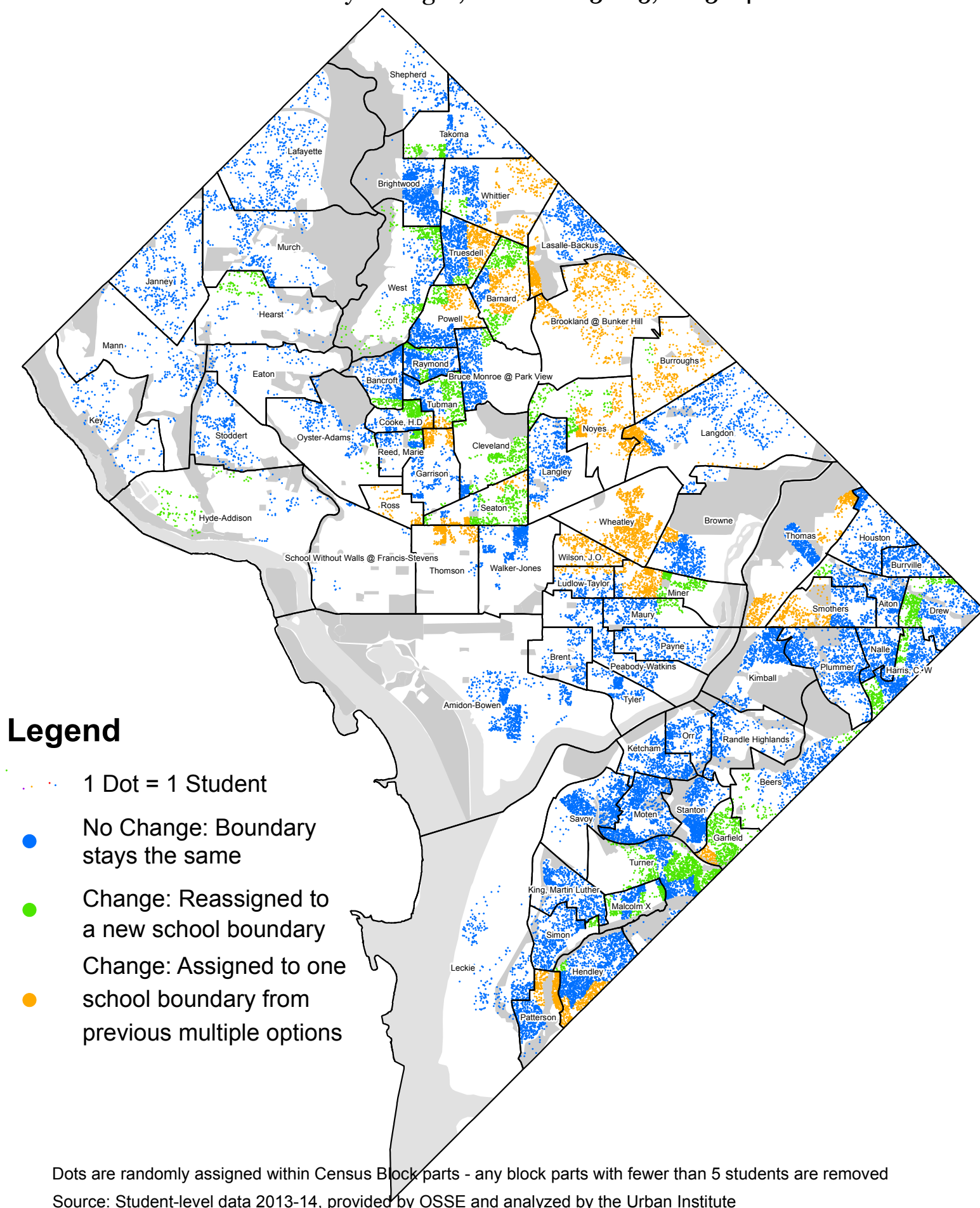


How Public School Students Are Impacted by the Initial Proposed Elementary School Boundary Changes, Grades PK3 to 5, 2013-14



The map highlights how the proposed elementary school boundaries will affect students compared to the current rights they have to their neighborhood school(s) today. The goal of the proposed boundaries was to change as little as possible while still addressing issues related to DCPS school closures, facility capacity concerns, and walkability or other transportation challenges. School capacity and transportation/walkability challenges were taken into consideration with the new proposed elementary school boundaries, reassigning some students to a new school.

Under the proposed elementary school boundaries, a little more than two-thirds (69%) of all public school students will not be impacted by the boundary changes, as they are currently proposed. Of the remaining almost one-third of elementary school students, 17% will be assigned to one school boundary from their previous multiple options and another 14% will be reassigned to a new school boundary.

Label Definitions

No Change: School boundary stays the same 69% of all public school students fall into this category

Blue dots represent the number of elementary public school students that will NOT be impacted by the proposed elementary school boundaries. The assigned school of right will remain the same for these students.

Change: Reassigned to a new school boundary 14% of all public school students fall into this category

Green dots represent the number of elementary public school students that will be impacted by the proposed elementary school boundaries. Under the current proposal, these families will be reassigned to a different school than they currently have access to now.

Change: Assigned to one school boundary from previous multiple options 17% of all public school students fall into this category

Orange dots represent the number of elementary public school students that will be impacted by the proposed elementary school boundaries. These students will be assigned to one school boundary from the multiple school options they currently have rights to. Due to the closings of DCPS schools and boundary consolidations occurring since 2008, some students currently have rights to multiple elementary schools. The proposed changes now grant these students access to only one of their current multiple schools options.