

Master Facilities Plan

Highlights

This foundational study provides the District with essential information to support current and future school facilities planning. The analysis and recommendations will aid the District in closing opportunity and achievement gaps, and enable us to build more equity and excellence into our public school systems.

Enrollment

2.8%

Annual public school enrollment growth since 2008

110,000

Projected student enrollment in 10 years

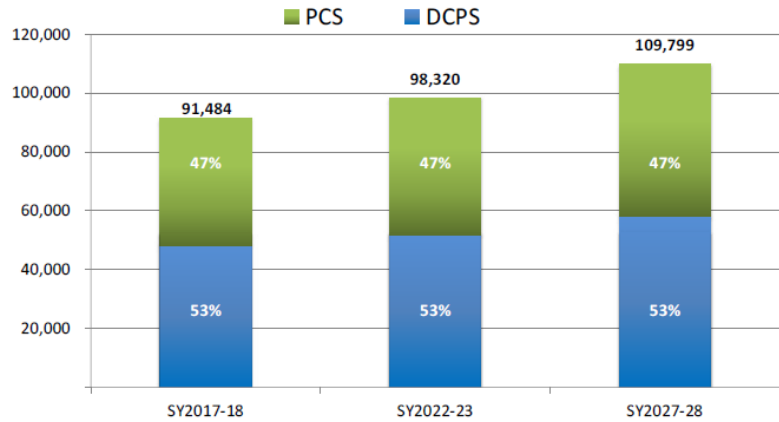
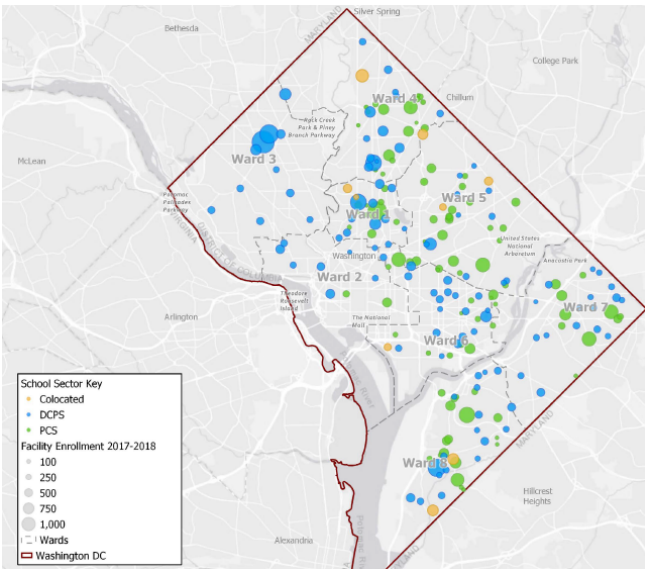


Figure 3.7 Total Enrollment and Sector Share, Audited SY2017-18 and Projected SY2022-23 and SY2027-28

Facilities



212 Facilities currently housing 249 public schools

Educational Facility Ownership Status, SY2017-18

OWNERSHIP STATUS	NUMBER
District-owned	141
DCPS School	110
PCS School	31
Not District-owned	71
PCS School - Commercial Lease	40
PCS School - Own, Former DCPS Facility	9
PCS School - Own, Private Acquisition	22
Total	212

Modernizations

87

DCPS schools have been renovated since 2002

110

Planned school

\$1.6B modernization investment over the next 6 years

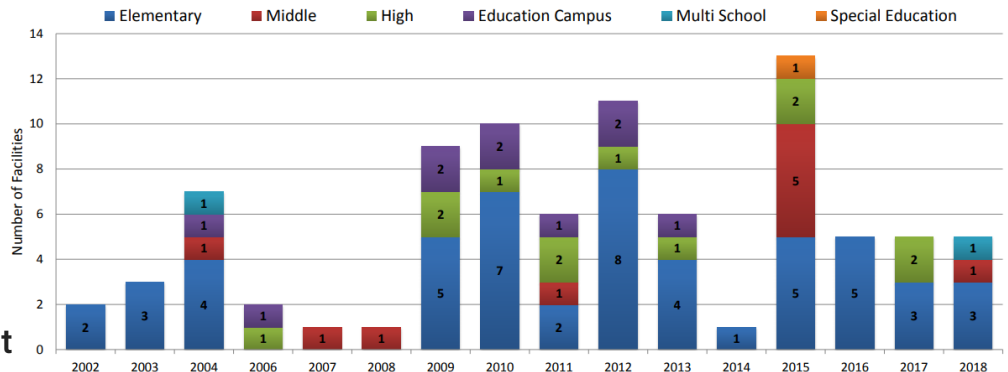
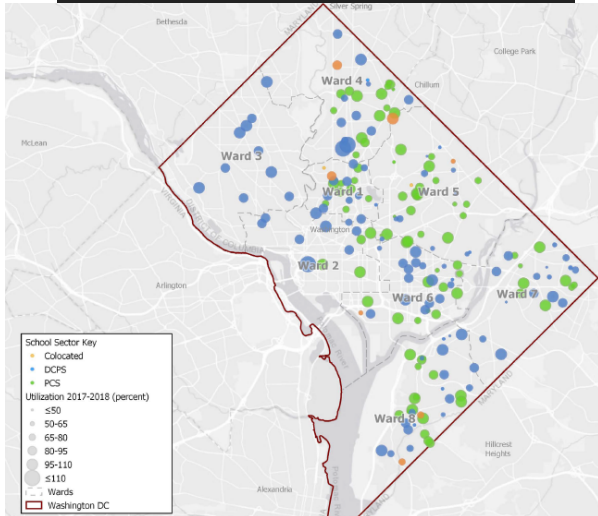


Figure 2.3 Count of DCPS Facility Modernization by Year and Grade Band

Master Facilities Plan

Highlights

Facilities Utilization



80%

Average utilization of public schools

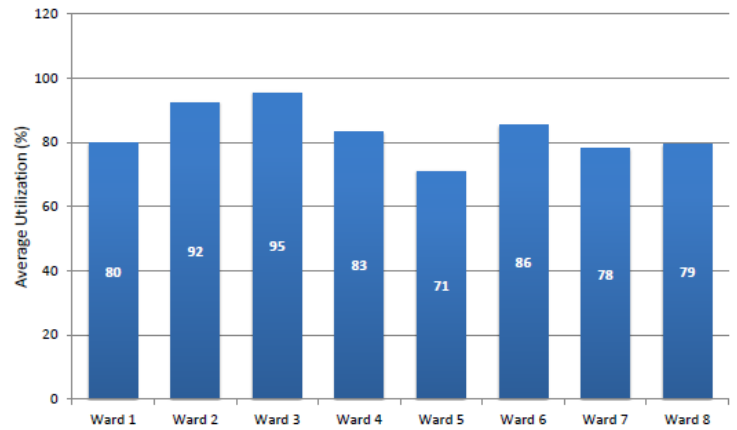


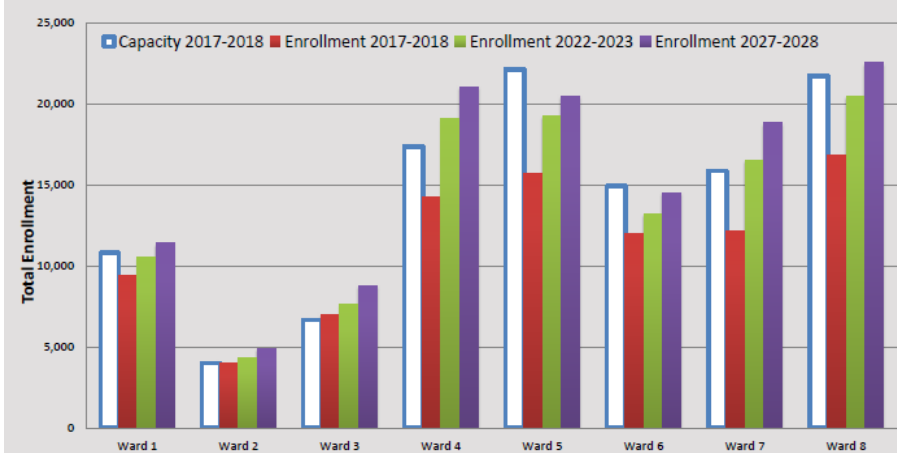
Figure 2.39 School Facility Utilization by Ward, SY2017-18

Gap Analysis

SY2027-28

Year in which estimated enrollment will outpace public school capacity in all wards except Wards 5 and 6, assuming DCPS and public charter schools realize their aspirational growth

Figure 3.18 District-Wide Ward Gap Analysis



Transportation

94%

of schools facilities are within a half-mile walk from a public transit stop

88%

of DC students live within a half-mile walking distance from their school or from public transit to their school or a specialized program.

