

Pathways to Opportunity: Alignment Between UDC Programming and Labor Market Demand

The Office of Education Through Employment Pathways (ETEP) is focused on building an understanding of how education and workforce opportunities align with labor market demand and disrupt patterns of inequity. Toward this goal, this brief examines programming available at the University of the District of Columbia (UDC) through two primary research questions:

- 1 To what extent do UDC programs and enrollment trends align with high-wage, high-demand jobs in the region?
- 2 What are the areas where DC anticipates significant labor market demand and UDC does not offer programming?

For a full explanation of the methodology to align programs and labor market demand, please reference the [Regional Education Laboratory Mid-Atlantic report \[1\]](#).

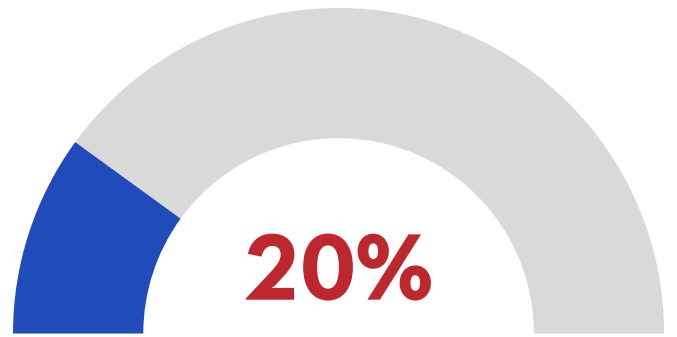
KEY INSIGHTS

Associate's Degree Programs

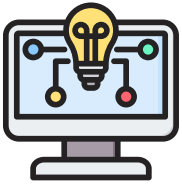
14

programs are associated with jobs that have at least 20 annual job openings for every student enrolled (for example, Construction Management or Business Administration).

Less than 20% of students are enrolled in programs that lead to living wage jobs, defined as those paying at least \$56k in the region [2].



UDC has an opportunity to expand existing programs that are aligned to high-demand, high-wage jobs



Computer Science



Information Technology



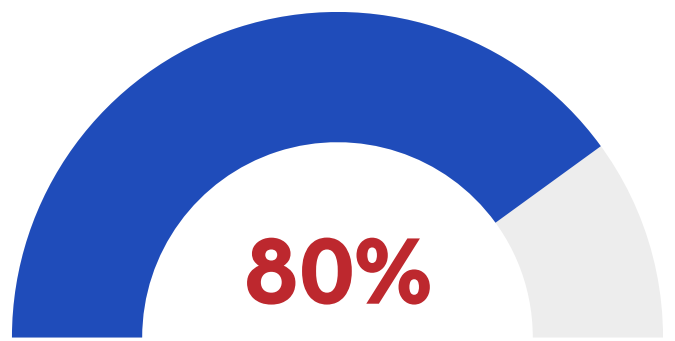
Aviation Maintenance Technology

Bachelor's Degree Programs

23

programs are associated with jobs that have at least 20 annual job openings for every student enrolled (for example, Finance, Accounting, or Psychology).

Over 80% of students are enrolled in programs that lead to living wage jobs paying \$56k or greater.



UDC can explore new program offerings in areas where there is high labor market demand, including:



Marketing



Communications



Aerospace Engineering

Sources: [1] Callaway, Isabel, et al. "Aligning the University of the District of Columbia's Program Offerings with Data on the Local Job Market." Institute of Education Sciences (IES), Regional Educational Laboratory Program (REL), ies.ed.gov/ncee/rel/Products/Region/midatlantic/Publication/108309.
 [2] MIT Living Wage Calculator, <https://livingwage.mit.edu/metros/47900>.